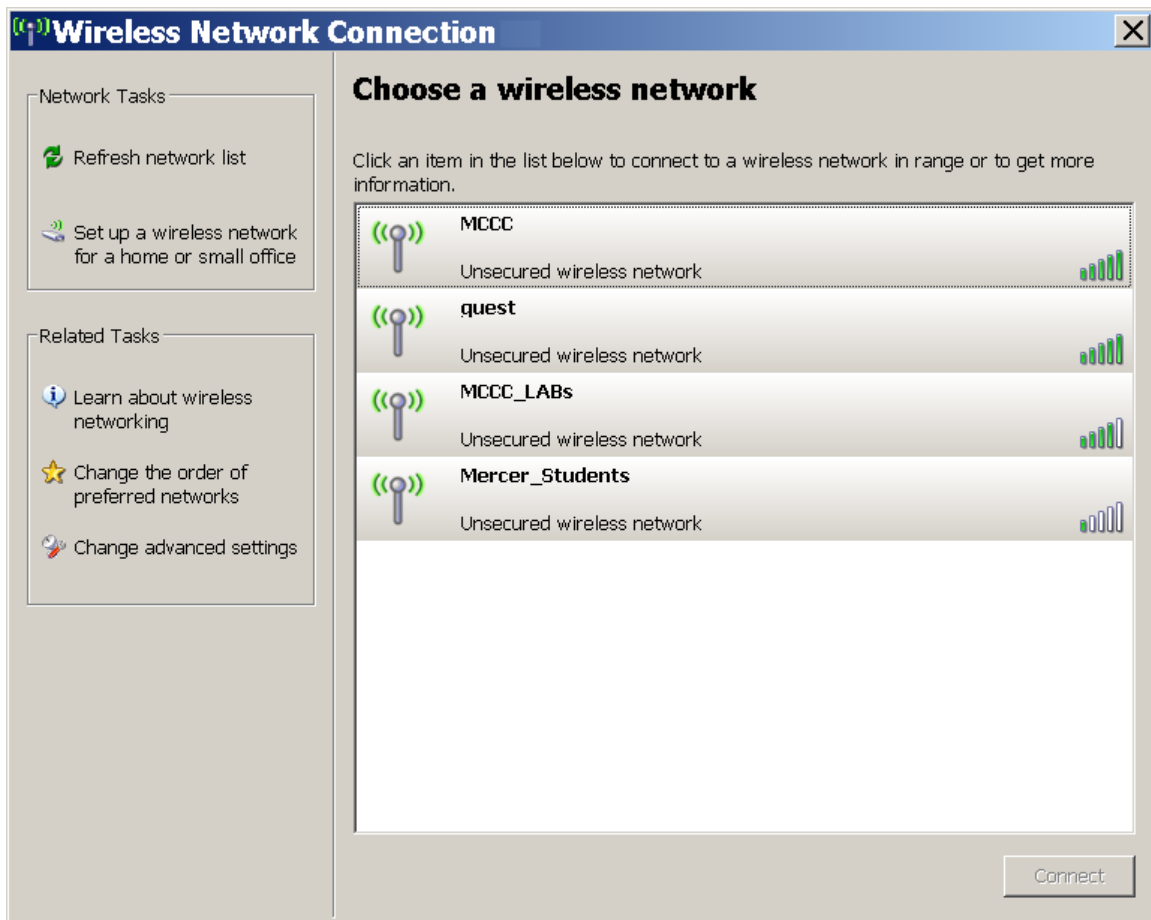


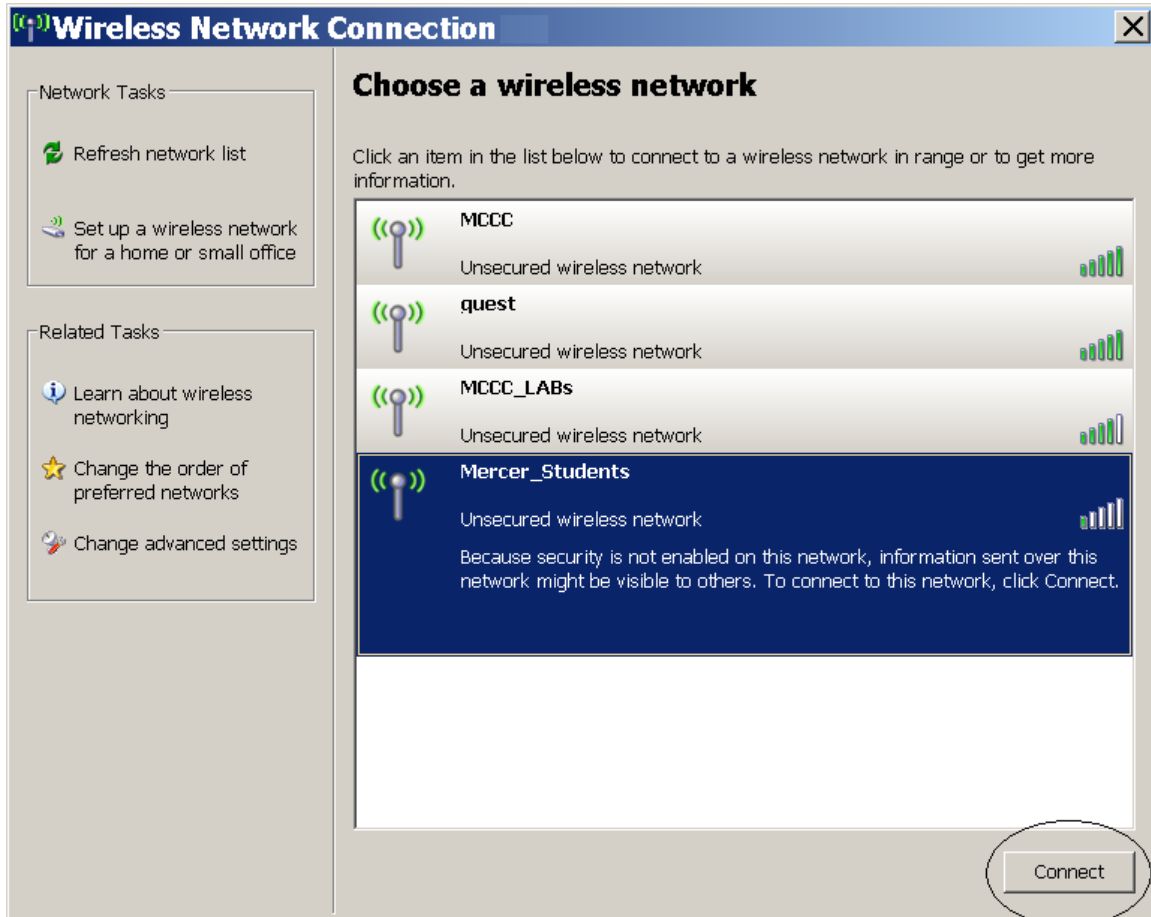
Mercer County Community College  
Information Technology Services  
Wireless Network Access

The procedures for gaining access to the Student and Guest wireless networks are provided below.

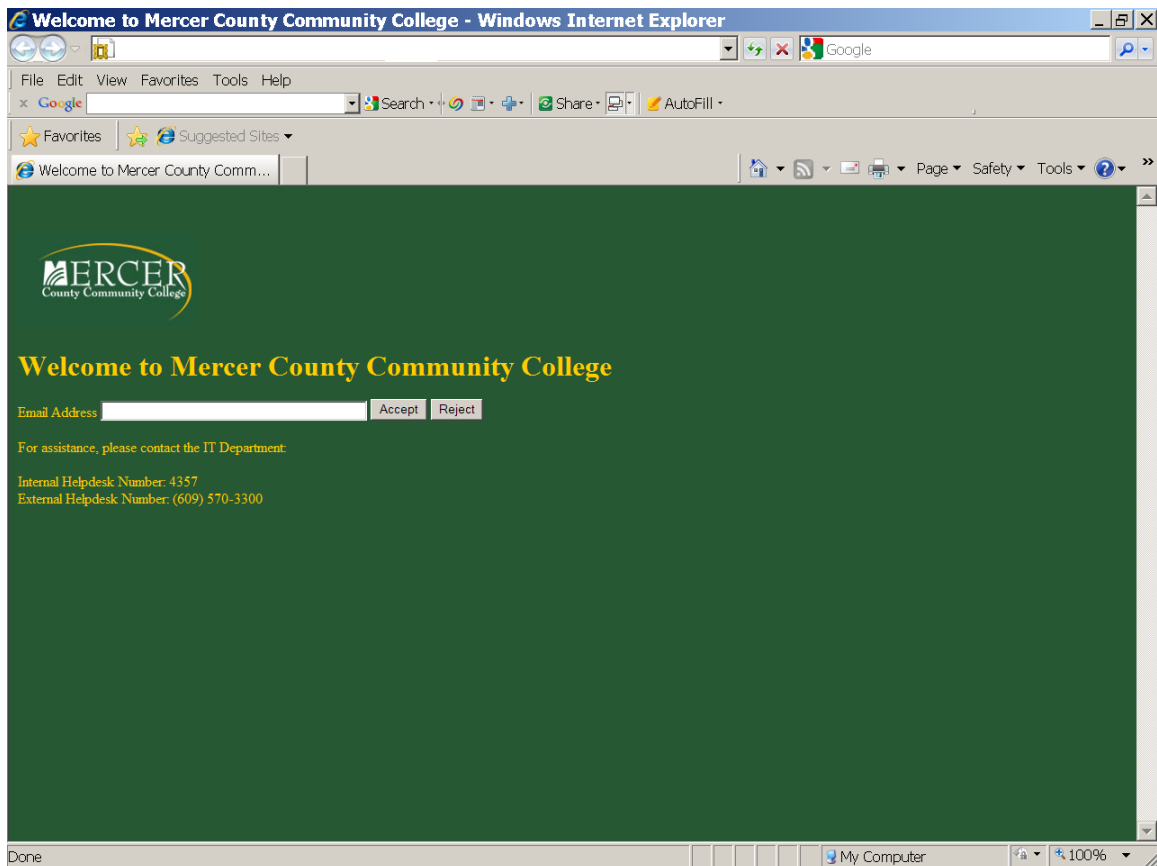
The first step in connecting to either the Students or Guest wireless network is selecting the proper Service Set Identifier (SSID). The screen capture below shows the SSIDs you are likely to see.



Select the appropriate SSID by clicking on it and then clicking on the “Connect” button. Please see below:



Please note that you are not fully connected yet. You must identify yourself or “authenticate” with the network. You do this through your internet browser. Open your browser and you should be redirected to the following screen:



Students should enter their Mercer County Community College Email address. Guests should enter their personal email address, for example [JQSample@YAHOO.com](mailto:JQSample@YAHOO.com).

Be sure to click on the “Accept” button. You must click on “Accept” or your connection will fail.

You should now be connected to the wireless network which grants you internet access only. You will not be able to access any student, faculty or staff services or resources.

For your convenience wireless hot spots are located in the following buildings:

#### West Windsor Campus

- AD building, 1<sup>st</sup> floor corridor.
- AD building, 2<sup>nd</sup> floor, room AD234A
- SC (student center) first floor
- LB (library) first floor.
- Reception Center/Welcome Center, second floor
- ES building rooms ES111 and ES122.
- FA building, first floor hallway.

James Kerney Campus

- Cafeteria, lower level KC building.

If you need assistance, please call the ITS Help Desk at one of the numbers below:

Internal (on campus) number: "HELP" (ext. 4357)

External number: (609) 570-3300.

Thank you!